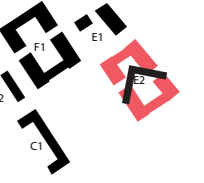


## 7.2 BLOCK E2

### 7.2.6 COURTYARD VIEW



## 7.2 BLOCK E2

### 7.2.7 INDICATIVE MATERIAL PALETTE



**METALWORK - OLIVE & BROWN**  
Colour: RAL TBC  
Painted metal



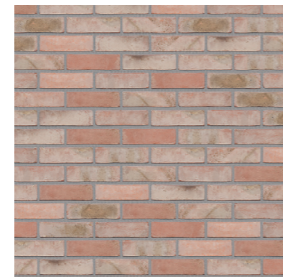
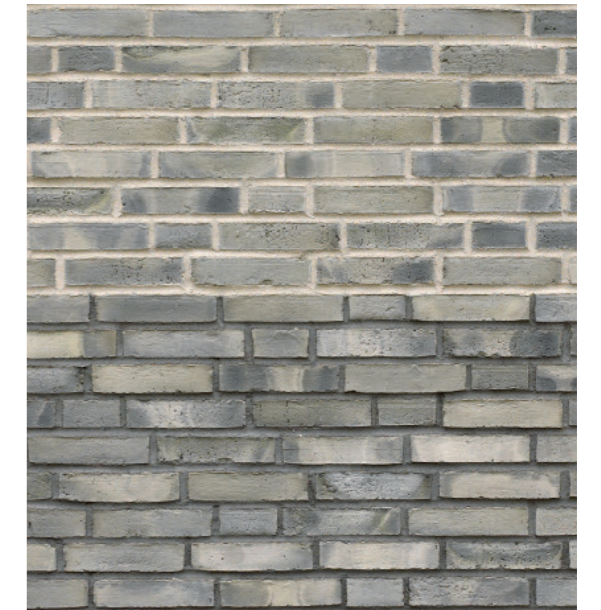
**METALWORK - BROWN**  
Colour: RAL TBC  
Painted metal



**METALWORK - BROWN**  
Colour: RAL TBC  
Painted metal



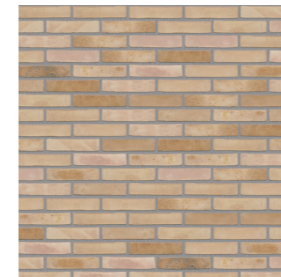
**METALWORK - LIGHT BRONZE**  
Colour: RAL TBC  
Painted metal



**LIGHT RED BRICK STRETCHER**  
UK format 215x102.5x65mm



**DARK RED BRICK STRETCHER**  
UK format 215x102.5x65mm



**LIGHT BUFF BRICK STRETCHER**  
UK format 215x102.5x65mm



**LIGHT GREY BRICK STRETCHER**  
UK format 215x102.5x65mm



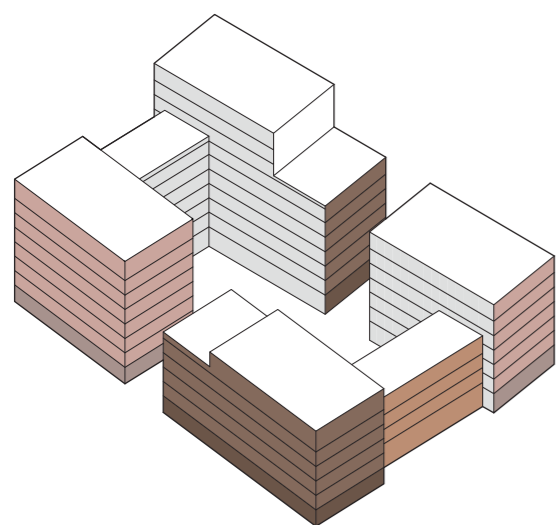
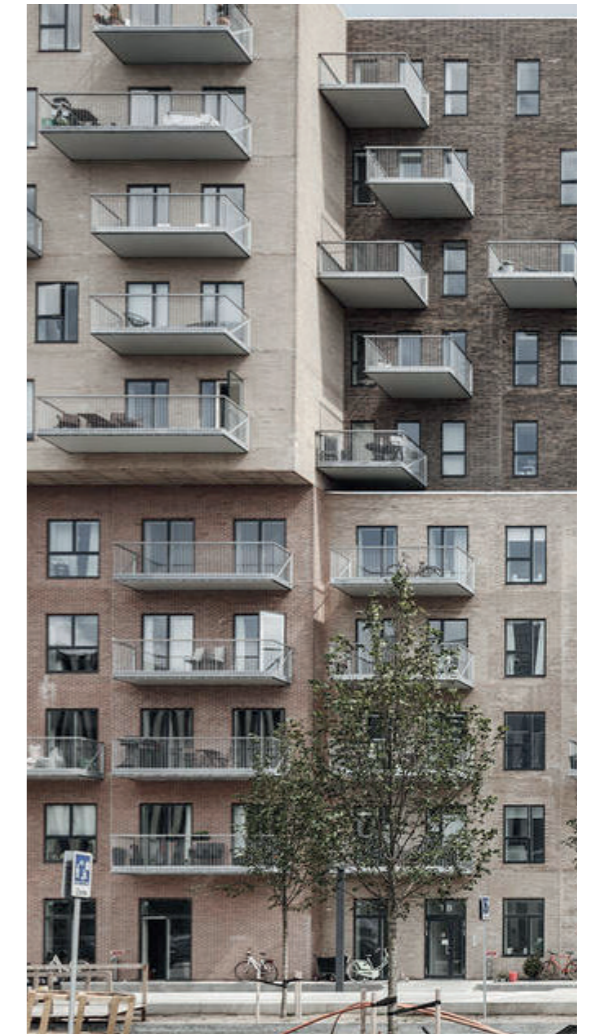
**DARK GREY & WARM GREY BRICK STRETCHER**  
UK format 215x102.5x65mm



**WARM GREY BRICK STRETCHER**  
UK format 215x102.5x65mm

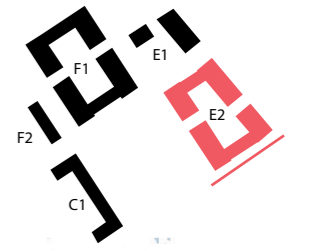


**DARK RED BRICK STRETCHER**  
UK format 215x102.5x65mm



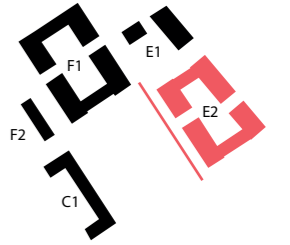
## 7.2 BLOCK E2

### 7.2.8 ELEVATION - SOUTH



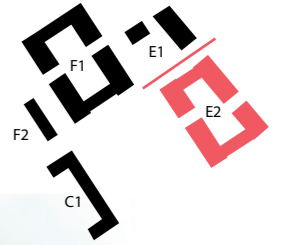
## 7.2 BLOCK E2

### 7.2.9 ELEVATION - WEST



## 7.2 BLOCK E2

### 7.2.10 ELEVATION - NORTH



## 7.2 BLOCK E2

### 7.2.11 ELEVATION - EAST

